

SECTION INDEX



OMAHA, NEBRASKA
(402) 453-9595
1-800-442-6009
FAX (402) 453-1740

Acme Rolled Threads.....	104
Left Hand Nuts	104
Left Hand Threads	104
Right Hand Nuts	104
Right Hand Threads	104
Keystock.....	102
National Coarse Threaded Rod	103
Non Stock Rolled Threads.....	103
Round Bend U-Bolts	103
Square Bend U-Bolts	103
Straight Studs.....	103
Tubing & Shafting.....	99-102
Hexagon Shafting	99
Precision Cut Keyed Shafting	101
PTO Torque Tubing	99
Rectangular Shafting	99
Rectangular Tubing	99
Round Shafting.....	100
Round Repair Tubing	100
Square Shafting	99
Square Tubing	99



**CATALOG
2011**

TUBING & SHAFTING



OMAHA, NEBRASKA
(402) 453-9595
1-800-442-6009
FAX (402) 453-1740

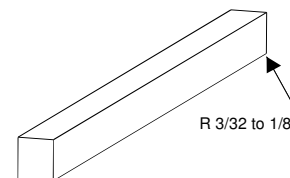
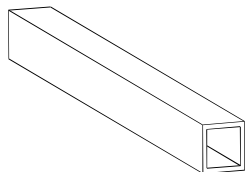
Items marked with an asterisk * will be available in 5' and 10' sections while supplies last. Once stock runs out, those items will be available in 6' & 12' sections. Specify section length and total footage of each size needed when ordering.

TUBING AND SHAFTING IS PRICED PER FOOT.

SQUARE TUBING & SHAFTING

Square Tubing & Shafting have a telescoping feature.

Square Shafting is de-cornered



Square Tubing

Square Shafting

6' Lengths	12' Lengths	Wall Thickness	Outside Dimension	Inside Dimension	Wt. Lbs./Ft.
132-1200	133-1200	.109	1	3/4	1.25
132-1400	133-1400	.105	1-1/8	7/8	1.57
132-1500	133-1500	.109	1-3/16	15/16	1.60
132-1600	133-1600	.109	1-1/4	1	1.70
132-1601	133-1601	.156	1-3/8	1	2.60
*132-1800	*133-1800	.109	1-3/8	1-1/8	1.93
132-1900	133-1900	.145	1-1/2	1-3/16	2.70
132-2000	133-2000	.165	1-5/8	1-1/4	3.30
132-2100	133-2100	.175	1-3/4	1-5/16	3.80
132-2200	*133-2200	.188	1-3/4	1-3/8	3.64
132-2400	133-2400	.165	1-7/8	1-1/2	3.80

6' Lengths	12' Lengths	Size	Wt. Lbs./Ft.
136-1200	137-1200	3/4	1.91
136-1400	137-1400	7/8	2.60
136-1500	137-1500	15/16	2.99
136-1600	137-1600	1	3.40
136-1800	137-1800	1-1/8	4.30
136-1900	137-1900	1-3/16	4.80
136-2000	137-2000	1-1/4	5.31
136-2100	137-2100	1-5/16	5.86
136-2200	137-2200	1-3/8	6.43
136-2400	137-2400	1-1/2	7.65

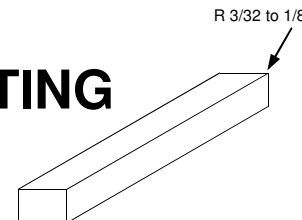
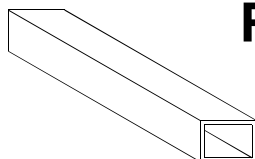
MATERIAL: 1010-1020 Tubing
WALL THICKNESS: ±.010
OUTSIDE DIMENSION: ±.010

MATERIAL: 1045 Cold Drawn
TOLERANCE: +0/- .005

RECTANGULAR TUBING & SHAFTING

Rectangular Tubing & Shafting have a telescoping feature.

Rectangular Shafting is de-cornered



Rectangular Tubing

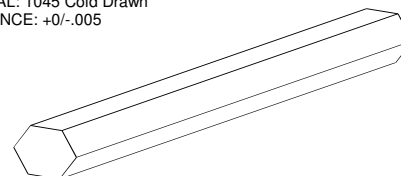
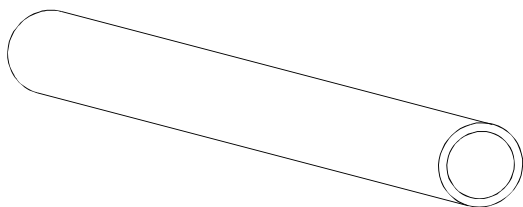
Rectangular Shafting

6' Lengths	12' Lengths	Wall Thickness	Outside Dimension	Inside Dimension	Wt. Lbs./Ft.
134-1214	135-1214	1/8	1 x 1-1/8	3/4 x 7/8	1.60
134-1618	135-1618	1/8	1-1/4 x 1-3/8	1 x 1-1/8	1.70

6' Lengths	12' Lengths	Size	Wt. Lbs./Ft.
138-1214	139-1214	3/4 x 7/8	2.23
138-1618	139-1618	1 x 1-1/8	3.83

MATERIAL: 1026 Tubing
OUTSIDE DIMENSION: ±10%
INSIDE DIMENSION: +.020 / - 0"

MATERIAL: 1045 Cold Drawn
TOLERANCE: +0/- .005



PTO TORQUE TUBING

HEXAGON SHAFTING

6' Lengths	12' Lengths	Fits Series	Outside Dimension	Inside Dimension	Wt. Lbs./Ft.
140-0600	141-0600	6N	1-5/8	1-15/32	1.37
140-1400	141-1400	12N-14N	2	1-13/16	1.70
140-3500	141-3500	35N	2-1/8	1-7/8	2.67
140-3501	141-3501	35N	2-1/8	1-61/64	1.87
140-4400	141-4400	44R-55N	2-1/2	2-15/64	3.39

6' Lengths	12' Lengths	Size	Wt. Lbs./Ft.
142-0900	143-0900	9/16	.95
142-1000	143-1000	5/8	1.15
142-1200	143-1200	3/4	1.66
142-1400	143-1400	7/8	2.25
142-1600	143-1600	1	2.56
142-1800	143-1800	1-1/8	3.73
142-2000	143-2000	1-1/4	4.60
142-2400	143-2400	1-1/2	6.58
142-2800	143-2800	1-3/4	9.03

MATERIAL: 1020-1026 DOM Tubing

MATERIAL: 1045 Cold Drawn

Manufactured in the USA



OMAHA, NEBRASKA
(402) 453-9595
1-800-442-6009
FAX (402) 453-1740

TUBING & SHAFTING

Specify section length and total footage of each size needed when ordering.

DOM TUBING & COLD DRAWN SHAFTING PRICED PER FOOT

1020 ROUND REPAIR TUBING

5' Lengths	10' Lengths	Outside Diameter	Inside Diameter	Wt. Lbs./Ft.
1/8 Inch Wall				
13021208	13121208	3/4	1/2	.80
13021410	13121410	7/8	5/8	.90
13021612	13121612	1	3/4	1.10
13021814	13121814	1-1/8	7/8	1.30
13022016	13122016	1-1/4	1	1.50
13022218	13122218	1-3/8	1-1/8	1.50
13022420	13122420	1-1/2	1-1/4	1.70
13022622	13122622	1-5/8	1-3/8	1.90
13022824	13122824	1-3/4	1-1/2	2.10
13023026	13123026	1-7/8	1-5/8	2.20
13023228	13123228	2	1-3/4	2.40
13023430	13123430	2-1/8	1-7/8	2.60
13023632	13123632	2-1/4	2	2.70
13024036	13124036	2-1/2	2-1/4	3.00
13024440	13124440	2-3/4	2-1/2	3.40
1/4 Inch Wall				
13041608	13141608	1	1/2	2.00
13041810	13141810	1-1/8	5/8	2.30
13042012	13142012	1-1/4	3/4	2.60
13042214	13142214	1-3/8	7/8	2.90
13042416	13142416	1-1/2	1	3.20
13042618	13142618	1-5/8	1-1/8	3.60
13042820	13142820	1-3/4	1-1/4	3.90
13043022	13143022	1-7/8	1-3/8	4.20
13043224	13143224	2	1-1/2	4.50
13043426	13143426	2-1/8	1-5/8	4.90
13043628	13143628	2-1/4	1-3/4	5.20
13043830	13143830	2-3/8	1-7/8	5.50
13044032	13144032	2-1/2	2	5.80
13044436	13144436	2-3/4	2-1/4	6.70

1018 ROUND SHAFT

3' Stock No.	6' Stock No.	12' Stock No.	Outside Diameter	Wt. Lbs./Ft.
147-0800	148-0800	149-0800	1/2	0.67
147-1000	148-1000	149-1000	5/8	1.04
147-1200	148-1200	149-1200	3/4	1.50
147-1400	148-1400	149-1400	7/8	2.04
147-1600	148-1600	149-1600	1	2.67
147-1800	148-1800	149-1800	1-1/8	3.38
147-1900	148-1900	149-1900	1-3/16	3.77
147-2000	148-2000	149-2000	1-1/4	4.17
147-2100	148-2100	149-2100	1-5/16	4.60
147-2200	148-2200	149-2200	1-3/8	5.05
147-2300	148-2300	149-2300	1-7/16	5.52
147-2400	148-2400	149-2400	1-1/2	6.01
147-2600	148-2600	149-2600	1-5/8	7.05
147-2800	148-2800	149-2800	1-3/4	8.18
147-3100	148-3100	149-3100	1-15/16	10.02
147-3200	148-3200	149-3200	2	10.68
147-3500	148-3500	149-3500	2-3/16	12.78
147-3900	148-3900	149-3900	2-7/16	15.86
147-4000	148-4000	149-4000	2-1/2	16.69
147-4700	148-4700	149-4700	2-15/16	23.04
147-4800	148-4800	149-4800	3	24.03
147-5000	148-5000	149-5000	3-1/8	26.08
147-5100	148-5100	149-5100	3-3/16	27.13
147-5200	148-5200	149-5200	3-1/4	28.21
147-5400	148-5400	149-5400	3-3/8	30.42
147-5500	148-5500	149-5500	3-7/16	31.55
147-5600	148-5600	149-5600	3-1/2	32.71
147-5800	148-5800	149-5800	3-5/8	35.09
147-6000	148-6000	149-6000	3-3/4	37.55
147-6300	148-6300	149-6300	3-15/16	41.40
147-6400	148-6400	149-6400	4	42.73

1144 STRESSPROOF ROUND SHAFT

3' Part No.	6' Part No.	12' Part No.	Size	Weight Lbs./Ft.
368-0800	369-0800	370-0800	1/2	0.67
368-1000	369-1000	370-1000	5/8	1.04
368-1200	369-1200	370-1200	3/4	1.50
368-1400	369-1400	370-1400	7/8	2.04
368-1600	369-1600	370-1600	1	2.67
368-1800	369-1800	370-1800	1-1/8	3.38
368-1900	369-1900	370-1900	1-3/16	3.77
368-2000	369-2000	370-2000	1-1/4	4.17
368-2200	369-2200	370-2200	1-3/8	5.05
368-2300	369-2300	370-2300	1-7/16	5.52
368-2400	369-2400	370-2400	1-1/2	6.01
368-2800	369-2800	370-2800	1-3/4	8.18
368-3100	369-3100	370-3100	1-15/16	10.02
368-3200	369-3200	370-3200	2	10.68
368-3500	369-3500	370-3500	2-3/16	12.78
368-3900	369-3900	370-3900	2-7/16	15.86
368-4000	369-4000	370-4000	2-1/2	16.69
368-4700	369-4700	370-4700	2-15/16	23.04

303 STAINLESS STEEL ROUND SHAFT

3' Stock	6' Stock	12' Stock	Outside Dia.	Weight Lbs./ Ft.
246-1000	247-1000	248-1000	5/8	1.04
246-1200	247-1200	248-1200	3/4	1.50
246-1600	247-1600	248-1600	1	2.67
246-1800	247-1800	248-1800	1-1/8	3.38
246-1900	247-1900	248-1900	1-3/16	3.77
246-2000	247-2000	248-2000	1-1/4	4.17
246-2300	247-2300	248-2300	1-7/16	5.52
246-2400	247-2400	248-2400	1-1/2	6.01
246-2700	247-2700	248-2700	1-11/16	
246-2800	247-2800	248-2800	1-3/4	8.18
246-3100	247-3100	248-3100	1-15/16	10.02

Average Mechanical Properties of 303 Stainless Steel

Magnetic Properties		% of Elong. In	Machinability % of CD1212	
Non-Magnetic		50	78	
Tensile Strength (Ksi)	Yield Strength (Ksi)	Brinell Hardness	Rockwell Hardness	
90 Min.	35 min.	160 min.	B80 min.	

Tubing/Shafting Threaded Rod

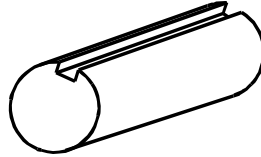
PRECISION CUT KEYED SHAFTING



OMAHA, NEBRASKA
(402) 453-9595
1-800-442-6009
FAX (402) 453-1740

Specify section length and total footage of size needed when ordering

SHAFTING PRICED PER FOOT



Tubing/Shafting
Threaded Rod

C1018 CD

1144 STRESSPROOF

3' Part No.	6' Part No.	12' Part No.	Size	Keyway	Wt. Lbs./ft.
144-0800	145-0800	146-0800	1/2	1/8 x 1/16	.67
144-1000	145-1000	146-1000	5/8	3/16 x 3/32	1.04
144-1100	145-1100	146-1100	11/16	3/16 x 3/32	1.26
144-1200	145-1200	146-1200	3/4	3/16 x 3/32	1.50
144-1300	145-1300	146-1300	13/16	3/16 x 3/32	1.76
144-1400	145-1400	146-1400	7/8	3/16 x 3/32	2.04
144-1404	145-1404	146-1404	7/8	1/4 x 1/8	2.04
144-1600	145-1600	146-1600	1	1/4 x 1/8	2.67
144-1800	145-1800	146-1800	1-1/8	1/4 x 1/8	3.38
144-1900	145-1900	146-1900	1-3/16	1/4 x 1/8	3.77
144-2000	145-2000	146-2000	1-1/4	1/4 x 1/8	4.17
144-2005	145-2005	146-2005	1-1/4	5/16 x 5/32	4.17
144-2100	145-2100	146-2100	1-5/16	5/16 x 5/32	4.60
144-2200	145-2200	146-2200	1-3/8	5/16 x 5/32	5.05
144-2300	145-2300	146-2300	1-7/16	3/8 x 3/16	5.52
144-2400	145-2400	146-2400	1-1/2	3/8 x 3/16	5.89
144-2600	145-2600	146-2600	1-5/8	3/8 x 3/16	7.05
144-2800	145-2800	146-2800	1-3/4	3/8 x 3/16	8.18
144-3100	145-3100	146-3100	1-15/16	1/2 x 1/4	10.00
144-3200	145-3200	146-3200	2	1/2	10.24
144-3500	145-3500	146-3500	2-3/16	1/2	12.34
144-3900	145-3900	146-3900	2-7/16	5/8	15.17
144-4000	145-4000	146-4000	2-1/2	5/8	16.00
144-4700	145-4700	146-4700	2-15/16	3/4	22.55
144-4800	145-4800	146-4800	3	3/4	23.04
144-5000	145-4000	146-4000	3-1/8	3/4	25.10
144-5100	145-5100	146-5100	3-3/16	3/4	26.16
144-5200	145-5200	146-5200	3-1/4	3/4	27.23
144-5400	145-5400	146-5400	3-3/8	7/8	29.06
144-5500	145-5500	146-5500	3-7/16	7/8	30.21
144-5600	145-5600	146-6500	3-1/2	7/8	31.37
144-5800	145-5800	146-5800	3-5/8	7/8	33.76
144-6000	145-6000	146-6000	3-3/4	7/8	36.23
144-6300	145-6300	146-3600	3-15/16	1	39.64
144-6400	145-6400	146-6400	4	1	40.97

3' Part No.	6' Part No.	12' Part No.	Size	Keyway	Wt. Lbs./ft.
365-0800	366-0800	367-0800	1/2	1/8	.67
365-1000	366-1000	367-1000	5/8	3/16	1.04
365-1200	366-1200	367-1200	3/4	3/16	1.50
365-1400	366-1400	367-1400	7/8	3/16	2.04
365-1600	366-1600	367-1600	1	1/4	2.67
365-1800	366-1800	367-1800	1-1/8	1/4	3.38
365-1900	366-1900	367-1900	1-3/16	1/4	3.77
365-2000	366-2000	367-2000	1-1/4	1/4	4.17
365-2200	366-2200	367-2200	1-3/8	5/16	5.05
365-2300	366-2300	367-2300	1-7/16	3/8	5.52
365-2400	366-2400	367-2400	1-1/2	3/8	5.89
365-2800	366-2800	367-2800	1-3/4	3/8	8.18
365-3100	366-3100	367-3100	1-15/16	1/2	10.00
365-3200	366-3200	367-3200	2	1/2	10.24
365-3500	366-3500	367-3500	2-3/16	1/2	12.34
365-3900	366-3900	367-3900	2-7/16	5/8	15.17
365-4000	366-4000	367-4000	2-1/2	5/8	16.00
365-4700	366-4700	367-4700	2-15/16	3/4	22.05

303 STAINLESS STEEL

3' Stock	6' Stock	12' Stock	Outside Dia.	Keyway Size	Wt. Lbs./ft.
244-1000	245-1000	243-1000	5/8	3/16x3/32	1.04
244-1200	245-1200	243-1200	3/4	3/16x3/32	1.50
244-1600	245-1600	243-1600	1	1/4x1/8	2.67
244-1800	245-1800	243-1800	1-1/8	1/4x1/8	3.38
244-1900	245-1900	243-1900	1-3/16	1/4x1/8	3.77
244-2000	245-2000	243-2000	1-1/4	1/4x1/8	4.17
244-2300	245-2300	243-2300	1-7/16	3/8x3/16	5.52
244-2400	245-2400	243-2400	1-1/2	3/8x3/16	6.01
244-2700	245-2700	243-2700	1-11/16	3/8x3/16	7.49
244-2800	245-2800	243-2800	1-3/4	3/8x3/16	8.18
244-3100	245-3100	243-3100	1-15/16	1/2x1/4	10.02

» Keyed Shafting available in 3', 6' or 12' sections.

» Other lengths, diameters and keyway sizes available by quotation.

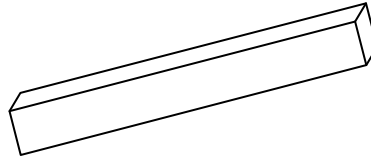
Manufactured in the USA by G&G Manufacturing Co.

KEY STOCK



OMAHA, NEBRASKA
(402) 453-9595
1-800-442-6009
FAX (402) 453-1740

Key Stock available per piece cut to length from
3/4" long to 1-1/2" long and in longer 1' or 12' sections.



Tubing/Shafting
Threaded Rod

Stock No.	Size	Length	Wt. Lbs./Ft.
411-0312	3/16 x 3/16	3/4"	.007
411-0314	3/16 x 3/16	7/8"	.009
411-0316	3/16 x 3/16	1"	.010
411-0318	3/16 x 3/16	1-1/8"	.011
411-0320	3/16 x 3/16	1-1/4"	.012
411-0323	3/16 x 3/16	1-7/16"	.014
411-0324	3/16 x 3/16	1-1/2"	.015
411-0412	1/4 x 1/4	3/4"	.013
411-0414	1/4 x 1/4	7/8"	.015
411-0416	1/4 x 1/4	1"	.018
411-0418	1/4 x 1/4	1-1/8"	.019
411-0420	1/4 x 1/4	1-1/4"	.022
411-0423	1/4 x 1/4	1-7/16"	.025
411-0424	1/4 x 1/4	1-1/2"	.027

Stock No.	Size	Length	Wt. Lbs./Ft.
411-0514	5/16 x 5/16	7/8"	.024
411-0516	5/16 x 5/16	1"	.028
411-0518	5/16 x 5/16	1-1/8"	.031
411-0520	5/16 x 5/16	1-1/4"	.035
411-0523	5/16 x 5/16	1-7/16"	.040
411-0524	5/16 x 5/16	1-1/2"	.042
411-0616	3/8 x 3/8	1"	.040
411-0618	3/8 x 3/8	1-1/8"	.045
411-0620	3/8 x 3/8	1-1/4"	.050
411-0623	3/8 x 3/8	1-7/16"	.057
411-0624	3/8 x 3/8	1-1/2"	.060
411-0626	3/8 x 3/8	1-5/8"	.065
411-0630	3/8 x 3/8	1-7/8"	.075
411-0826	1/2 x 1/2	1-5/8"	.115
411-0830	1/2 x 1/2	1-7/8"	.133

KEY STOCK BUNDLES

Stock No. 1' Pieces	Stock No. Min. Bndl.	Footage Per Bundle	Stock No. 12' Pieces	Size	Wt. Lbs./Ft.
407-0300	443-0300	42'	412-0300	3/16 x 3/16	.12
407-0400	443-0400	28'	412-0400	1/4 x 1/4	.21
407-0500	443-0500	21'	412-0500	5/16 x 5/16	.33
407-0600	443-0600	16'	412-0600	3/8 x 3/8	.48
407-0604	443-0604	17'	412-0604	3/8 x 1/4	.33
407-0800	443-0800	11'	412-0800	1/2 x 1/2	.85

303 STAINLESS STEEL KEY STOCK

1' Stock	12' Stock	Size	Wt. per ft.
408-0300	409-0300	3/16 x 3/32	.12
408-0400	409-0400	1/4 x 1/4	.21

» Cut to your requirements by quotation

NATIONAL COARSE ROLLED THREADS

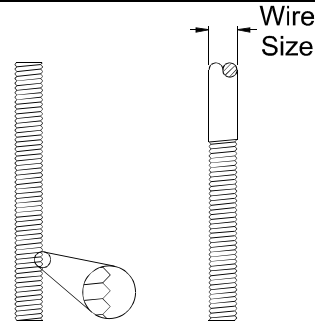


OMAHA, NEBRASKA
(402) 453-9595
1-800-442-6009
FAX (402) 453-1740

Tubing/Shafting Threaded Rod

Stock No. 3' Pieces	Stock No. 3' Min. Bdl.	Footage Per Bdl.	Stock No. 6' Pieces	Stock No. 6' Min. Bdl.	Footage Per Bdl.	Stock No. 12' Pieces	Size & Pitch	Wire Size	Wt. Lbs./Ft.
406-0420	441-0420	72'	410-0420	442-0420	72'	405-0420	1/4 x 20	.214	.13
406-0518	441-0518	48'	410-0518	442-0518	48'	405-0518	5/16 x 18	.273	.20
406-0616	441-0616	42'	410-0616	442-0616	42'	405-0616	3/8 x 16	.330	.29
406-0714	441-0714	33'	410-0714	442-0714	36'	405-0714	7/16 x 14	.387	.40
406-0813	441-0813	27'	410-0813	442-0813	30'	405-0813	1/2 x 13	.445	.53
406-0912	441-0912	21'	410-0912	442-0912	24'	405-0912	9/16 x 12	.503	.67
406-1011	441-1011	18'	410-1011	442-1011	18'	405-1011	5/8 x 11	.560	.84
406-1210	441-1210	12'	410-1210	442-1210	12'	405-1210	3/4 x 10	.678	1.23
406-1409	441-1409	9'	410-1409	442-1409	12'	405-1409	7/8 x 9	.795	1.70
406-1608	441-1608	6'	410-1608			405-1608	1 x 8	.911	2.30
406-1807	441-1807	6'	410-1807			405-1807	1-1/8 x 7	1.025	2.80
406-2007	441-2007	6'	410-2007			405-2007	1-1/4 x 7	1.149	3.40
406-3240			410-3240			405-3240	2 x 4-1/2	1.843	9.07

1010/1018 Grade 2
Class 2A Rolled Threads
65,000 to 75,000 PSI Tensile Strength
3', 6', or 12' Sections Available
Plain Finish



NON STOCK U-BOLTS, STUDS, ANCHOR BOLTS & EYE BOLTS

Specify all dimensions when requesting quotations or orders. PRICED BY QUOTATION

ROUND BEND U-BOLTS

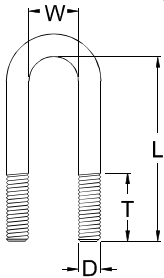


Figure 1

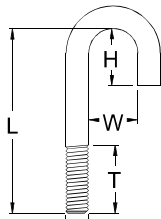


Figure 2

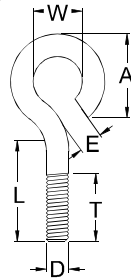


Figure 3

SQUARE BEND U-BOLTS

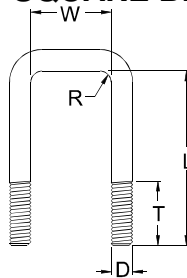


Figure 4

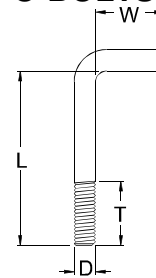


Figure 5

STRAIGHT STUDS

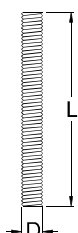


Figure 6

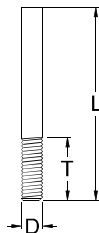


Figure 7

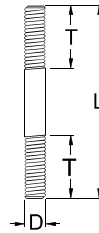


Figure 8

Manufactured in the USA
by G&G Manufacturing Co.



OMAHA, NEBRASKA
 (402) 453-9595
 1-800-442-6009
 FAX (402) 453-1740

ACME ROLLED THREADS

Threaded Rod and Nuts are available in different material grades, pitches and lengths upon request.

THREADED ROD

1010/1018 Class 2G Rolled Threads
 Plain Finish

Right Hand Threads

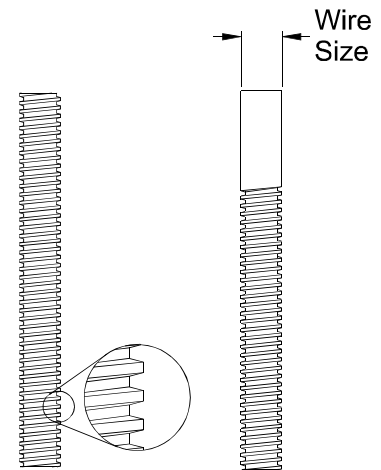
Stock No. 3' Pieces	Stock No. 6' Pieces	Stock No. 12' Pieces	Size & Pitch	Wire Size	Wt. Lbs./Ft.
400-0416	404-0416	402-0416	1/4 x 16	.214	.13
400-0612	404-0612	402-0612	3/8 x 12	.325	.28
400-0810	404-0810	402-0810	1/2 x 10	.440	.51
400-1008	404-1008	402-1008	5/8 x 8	.550	.80
400-1006	404-1006	402-1006	5/8 x 6	.534	.80
400-1210	404-1210	402-1210	3/4 x 10	.687	1.26
400-1206	404-1206	402-1206	3/4 x 6	.656	1.15
400-1406	404-1406	402-1406	7/8 x 6	.780	1.63
400-1605	404-1605	402-1605	1 x 5	.887	2.11
400-1604	404-1604	402-1604	1 x 4	.875	2.04
400-16-4	404-16-4	402-16-4	1 x 4 Stub	.911	2.30
400-1805	404-1805	402-1805	1-1/8 x 5	1.012	2.84
400-2005	404-2005	402-2005	1-1/4 x 5	1.136	3.57
400-2404	404-2404	402-2404	1-1/2 x 4	1.369	5.04
400-2804	404-2804	402-2804	1-3/4 x 4	1.615	7.05
400-3204	404-3204	402-3204	2 x 4	1.862	9.38

Left Hand Threads

Stock No. 6' Pieces	Size & Pitch	Wire Size	Wt. Lbs./Ft.
401-1008	5/8 x 8	.550	.80
401-1206	3/4 x 6	.656	1.15
401-1406	7/8 x 6	.780	1.63
401-1605	1 x 5	.887	2.11
401-1805	1-1/8 x 5	1.012	2.84
401-2005	1-1/4 x 5	1.136	3.57

Left Hand Acme Threaded Rod Sizes not shown are available by quotation.

SEND YOUR INQUIRIES



Double Lead Acme Threaded Rod and Ball Screws are also available. We have tooling for 3/4 x 6, 7/8 x 6, 1 x 5, 1-1/8 x 5, 1-1/4 x 5 and 1-3/4 x 4 Double Lead Acme and 1 x 3-1/2 and 1-1/4 x 3-1/2 Ball Screws.

SEND YOUR INQUIRIES

HEX NUTS

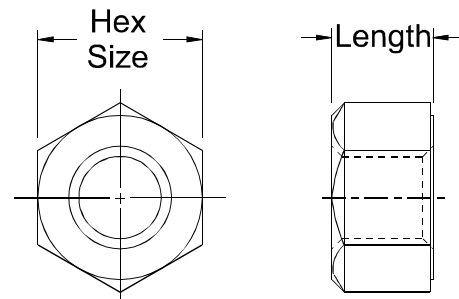
12L14 Screw
 Stock

Right Hand Nuts

Stock No.	Size & Pitch	Hex Size	Length	Wt. Lbs.
413-0416	1/4 x 16	1/2	1/4	.01
413-0612	3/8 x 12	11/16	3/8	.03
413-0810	1/2 x 10	7/8	1/2	.09
413-1008	5/8 x 8	1-1/16	5/8	.13
413-1006	5/8 x 6	1-1/16	5/8	.13
413-1210	3/4 x 10	1-1/4	3/4	.20
413-1206	3/4 x 6	1-1/4	3/4	.20
413-1406	7/8 x 6	1-7/16	7/8	.32
413-1605	1 x 5	1-5/8	1	.44
413-1604	1 x 4	1-5/8	1	.44
413-16-4	1 x 4 Stub	1-5/8	1	.44
413-1805	1-1/8 x 5	1-13/16	1-1/8	.63
413-2005	1-1/4 x 5	2	1-1/4	.83
413-2404	1-1/2 x 4	2-3/8	1-1/2	1.38
413-2804	1-3/4 x 4	2-3/4	1-3/4	2.13
413-3204	2 x 4	3-1/2	2	4.25

Left Hand Nuts

Stock No.	Size & Pitch	Hex Size	Length	Wt. Lbs.
414-1008	5/8 x 8	1-1/16	5/8	.13
414-1206	3/4 x 6	1-1/4	3/4	.20
414-1406	7/8 x 6	1-7/16	7/8	.32
414-1605	1 x 5	1-5/8	1	.44
414-1805	1-1/8 x 5	1-13/16	1-1/8	.63
414-2005	1-1/4 x 5	2	1-1/4	.83



Tubing/Shafting Threaded Rod