

SECTION INDEX



OMAHA, NEBRASKA
(402) 453-9595
1-800-442-6009
FAX (402) 453-1740

Heavy Duty Square Tube Swivel Jacks	105
2,000 Lb.....	105
5,000 Lb.....	105
High Capacity Jacks	108
9,000 Lb.....	108
10,000 Lb.....	108
12,000 Lb.....	108
Jack Replacement Components.....	106
Bevel Gear Kit	106
Bolt-on/Weld-on Locking Pin Kits	107
Crank Replacement Kits.....	106
Mounting Brackets.....	106
Screw Replacements Kits	107
Side Wind Crank Bearing Kit	106
Tube Mount Locking Pin Kit.....	107



EST.
1943

**CATALOG
2011**

**UPC Bar Coding is available on stock items
Upon customer request.**

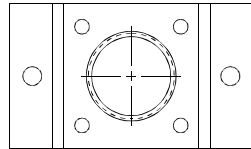
HEAVY DUTY SQUARE TUBE SWIVEL JACKS



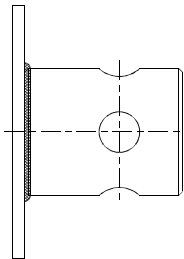
OMAHA, NEBRASKA
 (402) 453-9595
 1-800-442-6009
 FAX (402) 453-1740

Swivel Jacks are manufactured from Heavy Duty square tubing. Top wind and side wind models are available with tube mount, weld on and bolt on mounting brackets. Jacks ordered by stock number furnished complete with mounting brackets as shown. Jacks can be produced less the mounting brackets or attachments with various lift lengths.

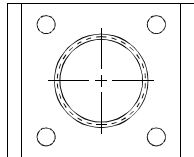
SEND YOUR INQUIRIES



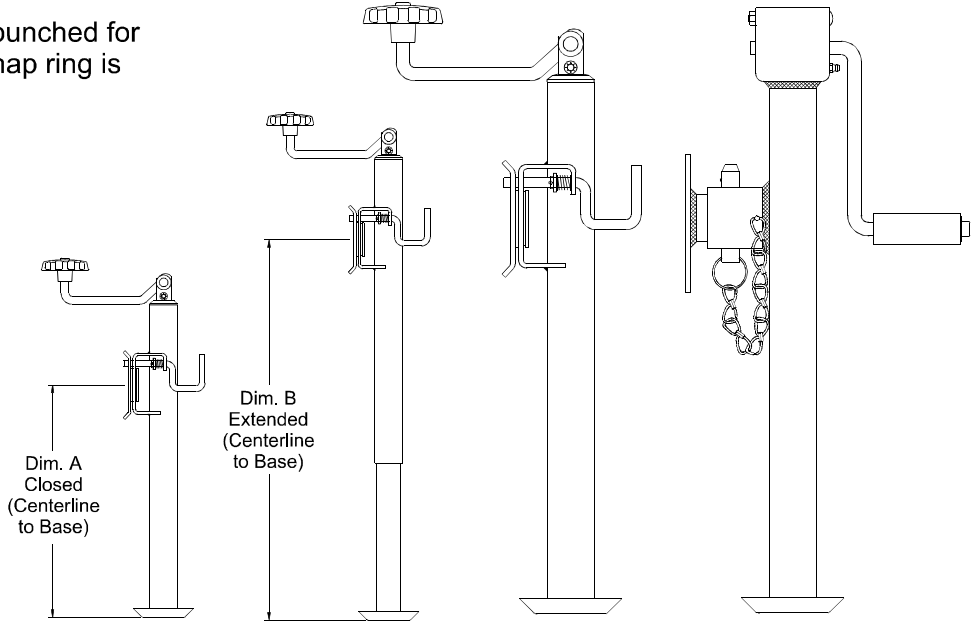
BOLT ON
 Holes are punched for 1/2" bolt. Snap ring is included.



TUBE MOUNT



WELD ON
 Snap ring is included.



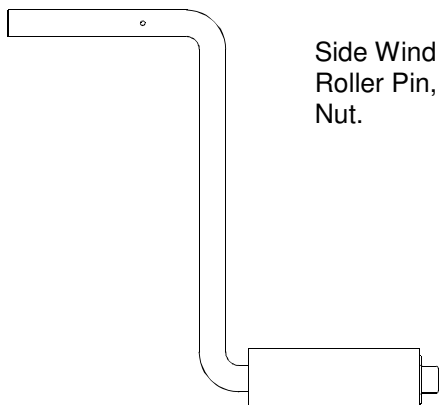
Stock No.	Capacity	Mounting	Handle Type	Lift	A	B	Wt. Lbs.
450SB210	2,000 Lbs.	Bolt On	Side Wind	10"	11-7/16	21-7/16	12.02
450SB215	2,000 Lbs.	Bolt On	Side Wind	15"	14-13/16	29-13/16	14.00
450ST210	2,000 Lbs.	Tube Mount	Side Wind	10"	11-7/16	21-7/16	13.05
450ST215	2,000 Lbs.	Tube Mount	Side Wind	15"	14-13/16	29-13/16	14.07
450SW210	2,000 Lbs.	Weld On	Side Wind	10"	11-7/16	21-7/16	11.09
450SW215	2,000 Lbs.	Weld On	Side Wind	15"	14-13/16	29-13/16	13.00
450TB210	2,000 Lbs.	Bolt On	Top Wind	10"	11-7/16	21-7/16	10.03
450TB215	2,000 Lbs.	Bolt On	Top Wind	15"	14-13/16	29-13/16	12.01
450TT210	2,000 Lbs.	Tube Mount	Top Wind	10"	11-7/16	21-7/16	12.01
450TT215	2,000 Lbs.	Tube Mount	Top Wind	15"	14-13/16	29-13/16	13.05
450TW210	2,000 Lbs.	Weld On	Top Wind	10"	11-7/16	21-7/16	10.04
450TW215	2,000 Lbs.	Weld On	Top Wind	15"	14-13/16	29-13/16	11.08
450-0510	5,000 Lbs.	Bolt On	Side Wind	10"	11-7/16	21-7/16	16.74
450-0515	5,000 Lbs.	Bolt On	Side Wind	15"	14-13/16	29-13/16	19.02
451-0510	5,000 Lbs.	Tube Mount	Side Wind	10"	11-7/16	21-7/16	17.22
451-0515	5,000 Lbs.	Tube Mount	Side Wind	15"	14-13/16	29-13/16	19.59
452-0510	5,000 Lbs.	Weld On	Side Wind	10"	11-7/16	21-7/16	16.23
452-0515	5,000 Lbs.	Weld On	Side Wind	15"	14-13/16	29-13/16	18.50
455-0510	5,000 Lbs.	Bolt On	Top Wind	10"	11-7/16	21-7/16	15.52
455-0515	5,000 Lbs.	Bolt On	Top Wind	15"	14-13/16	29-13/16	17.64
456-0510	5,000 Lbs.	Tube Mount	Top Wind	10"	11-7/16	21-7/16	15.90
456-0515	5,000 Lbs.	Tube Mount	Top Wind	15"	14-13/16	29-13/16	18.14
457-0510	5,000 Lbs.	Weld On	Top Wind	10"	11-7/16	21-7/16	14.92
457-0515	5,000 Lbs.	Weld On	Top Wind	15"	14-13/16	29-13/16	17.28



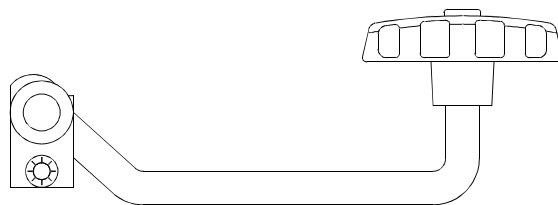
OMAHA, NEBRASKA
 (402) 453-9595
 1-800-442-6009
 FAX (402) 453-1740

JACK REPLACEMENT COMPONENTS

CRANK REPLACEMENT KITS



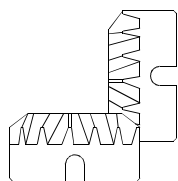
Side Wind Crank Kit includes:
 Roller Pin, Knob, Crank and Pal Nut.



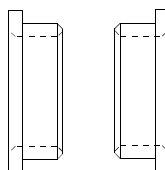
Top Wind Crank Kit includes:
 Clevis, Clevis Pin, 1/4" Pal Nut,
 2 ea. 1/2" Pal Nuts, Washer,
 Crank and Knob.

Stock No.	Capacity	Handle Type	Wt. Lbs.
48012201	2,000 Lbs.	Side Wind	.86
48012501	5,000 Lbs.	Side Wind	1.08
48567201	2,000 Lbs.	Top Wind	.84
48567501	5,000 Lbs.	Top Wind	1.04

Jacks

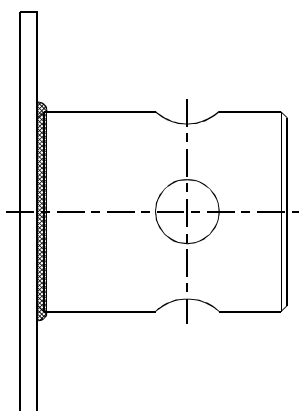


BEVEL GEAR KIT
Stock No. 48012200
 Bevel Gear Kit includes:
 2 Gears and 2 Roller Pins
 Fits 2,000 & 5,000 lbs. Jacks
 Wt.Lbs. .38

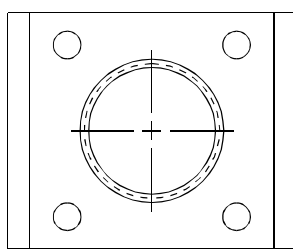


SIDE WIND CRANK BEARING KIT
Stock No. 48012202
 Crank Bearing Kit includes:
 2 Bronze Bearings.
 Fits 2,000 & 5,000 lbs. Jacks
 Wt.Lbs. .02

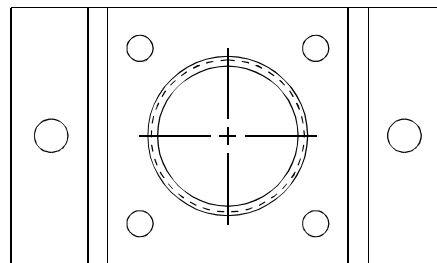
MOUNTING BRACKETS



Tube Mount



Weld On



Bolt On

Stock No.	Mounting	Capacity	Wt. Lbs.
460AS011	Tube Mount		1.84
460U9218	Weld On	2,000 Lbs.	.68
460W9218	Weld On	5,000 Lbs.	.86
460B9218	Bolt On	2,000 Lbs.	1.14
46059218	Bolt On	5,000 Lbs.	1.34
460A9218	Snap Ring	2,000 Lbs.	.02
460C9218	Snap Ring	5,000 Lbs.	.04

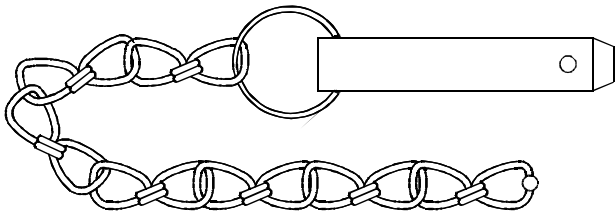
JACK REPLACEMENT COMPONENTS



OMAHA, NEBRASKA
(402) 453-9595
1-800-442-6009
FAX (402) 453-1740

TUBE MOUNT LOCKING PIN KITS

For both 2,000 and 5,000 lb. Jacks

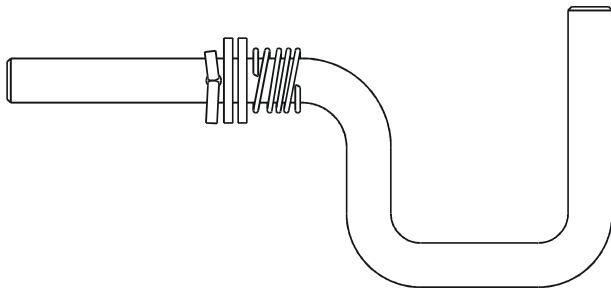


Stock No. 48140200

Pin Kit Includes: Pin, Ring, Chain and Cotter Pin. Wt. Lbs. .44

BOLT-ON/WELD-ON LOCKING PIN KITS

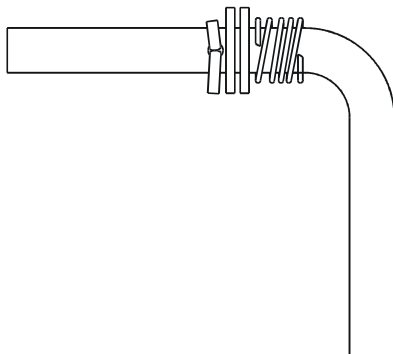
For both 2,000 and 5,000 lb. Jacks



TOP WIND SWIVEL LOCK PIN KIT

Stock No. 48140300

Pin Kit Includes: Pin, Spring, (2) Machinery Bushings and Cotter Pin. Wt. Lbs. .25



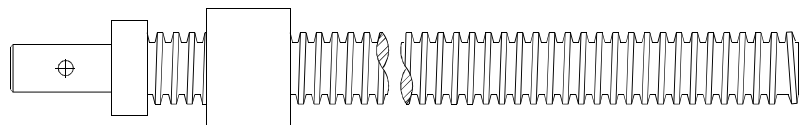
SIDE WIND SWIVEL LOCK PIN KIT

Stock No. 48140400

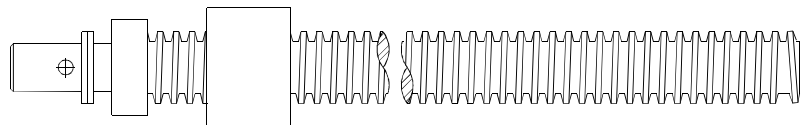
Pin Kit Includes: Pin, Spring, (2) Machinery Bushings and Cotter Pin. Wt. Lbs. .20

SCREW REPLACEMENT KITS

Stock No.	Capacity	Handle Type	Lift	Wt. Lbs.
48012210	2,000 Lbs.	Side Wind	10"	1.56
48012215	2,000 Lbs.	Side Wind	15"	2.02
48012510	5,000 Lbs.	Side Wind	10"	2.90
48012515	5,000 Lbs.	Side Wind	15"	3.88
48567210	2,000 Lbs.	Top Wind	10"	1.62
48567215	2,000 Lbs.	Top Wind	15"	2.08
48567510	5,000 Lbs.	Top Wind	10"	2.98
48567515	5,000 Lbs.	Top Wind	15"	3.96



Side Wind Screw Kit includes: Screw, Bearing and Nut.



Top Wind Screw Kit includes: Screw, Bearing, 2 Washers and Nut.



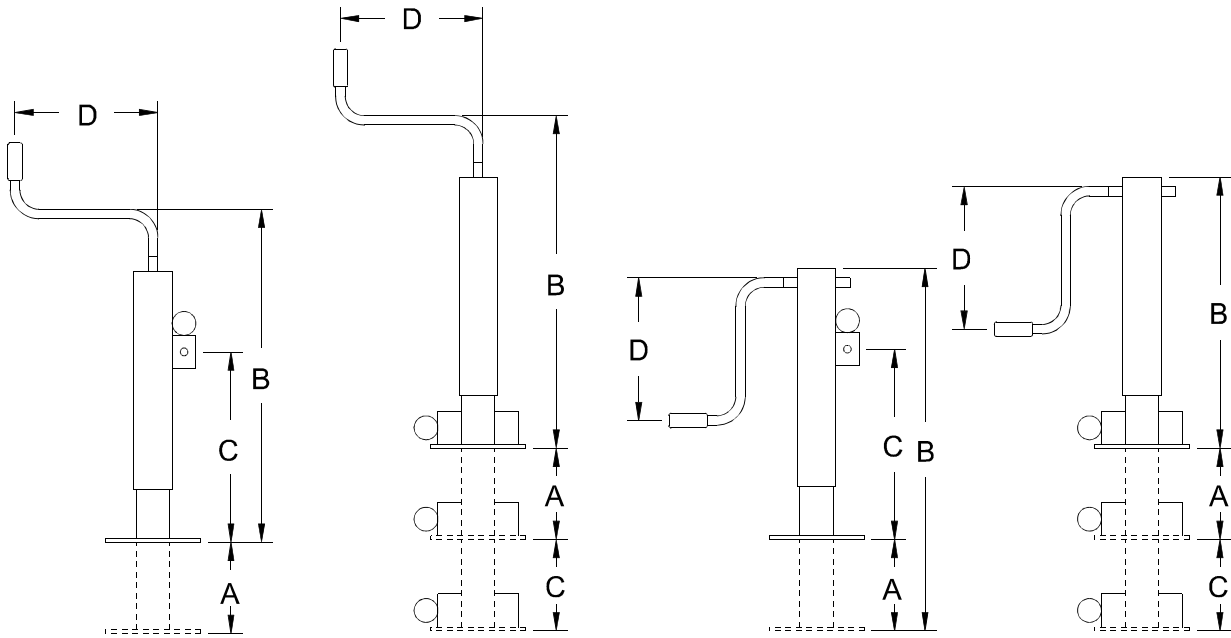
OMAHA, NEBRASKA
 (402) 453-9595
 1-800-442-6009
 FAX (402) 453-1740

HIGH CAPACITY JACKS

SPECIAL FEATURES:

- ▶ Double 3/4" Snap Lock Plunger on Drop Leg.
- ▶ Fast Dolly action in 1-1/2" increments on Drop Leg.
- ▶ Large 1-1/4 x 6 Left-hand Acme precision rolled jack screw.
- ▶ Square full shouldered ductile drive nut.
- ▶ Large crank turning radius.
- ▶ Large sand shoe - up to 9" x 10".
- ▶ Red Oxide Primer Finish.

Jacks



Stock No. : **460-0901**
 Model No. : **9-TW-13(TM)**

Stock No. : **460-0902**
 Model No. : **9-TW-25DL(DW)**

Stock No. : **460-1000**
 Model No. : **10-SW-13(TM)**

Stock No. : **460-1200**
 Model No. : **12-SW-25DL(DW)**

Stock No.	Model No.	Capacity	Handle Type	A	B	C	D	Tube Size	Wt. Lbs.
460-0901	9-TW-13(TM)	9,000 Lbs.	Top Wind	13	26-3/4	20-1/2	15	4 x 4 x 3/16	52.00
460-0902	9-TW-25DL(DW)	9,000 Lbs.	Top Wind	13	26-3/4	12	15	4 x 4 x 3/16	58.00
460-1000	10-SW-13(TM)	10,000 Lbs.	Side Wind	13	28	20-1/2	15	4 x 4 x 3/16	56.00
460-1200	12-SW-25DL(DW)	12,000 Lbs.	Side Wind	13	29	12	15	4 x 4 x 3/16	64.00

Custom jacks and mounting brackets are available by quotation.

SEND YOUR INQUIRIES