

SECTION INDEX



OMAHA, NEBRASKA
(402) 453-9595
1-800-442-6009
FAX (402) 453-1740

Connector Links	2
Offset Links	2
Roller Chain-10' Boxes	2
Roller Chain-Reels	2
Specifications	1



**CATALOG
2011**

**UPC Bar Coding is available on stock items
upon customer request.**

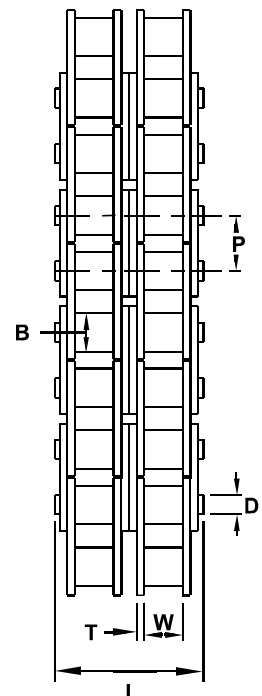
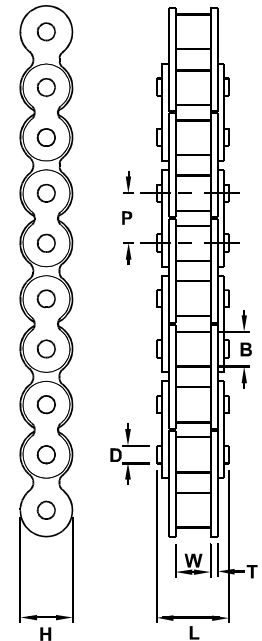
ROLLER CHAIN



OMAHA, NEBRASKA
(402) 453-9595
1-800-442-6009
FAX (402) 453-1740

Manufactured to ANSI Standards

Chain No.	Pitch P	Roller		Pin		Link Plate		Tensile Strength Lbs.	Wt. Lbs./Ft.
		B	W	D	L	T	H		
35*	3/8	.200	3/16	.141	.500	.050	.350	2100	.21
41	1/2	.306	1/4	.141	.578	.050	.383	2000	.25
40	1/2	.312	5/16	.156	.695	.060	.466	3700	.42
50	5/8	.400	3/8	.200	.855	.080	.584	6100	.69
60	3/4	.468	1/2	.234	1.081	.094	.700	8500	1.00
80	1	.625	5/8	.312	1.378	.125	.934	14500	1.71
100	1-1/4	.750	3/4	.375	1.701	.156	1.166	24000	2.58
120	1-1/2	.875	1	.437	2.130	.187	1.400	34000	3.87
140	1-3/4	1.000	1	.500	2.274	.219	1.634	46000	4.95
160	2	1.125	1-1/4	.562	2.712	.250	1.866	58000	6.61
200	2-1/2	1.562	1-1/2	.781	3.337	.312	2.250	95000	10.96
50H	5/8	.400	3/8	.200	.922	.094	.571	7500	.80
60H	3/4	.468	1/2	.234	1.185	.125	.700	8500	1.22
80H	1	.625	5/8	.312	1.504	.156	.934	14500	2.03
35-2	3/8	.200	3/16	.141	.900	.050	.350	4200	.40
40-2	1/2	.312	5/16	.156	1.259	.060	.466	7400	.82
50-2	5/8	.400	3/8	.200	1.585	.080	.584	12200	1.36
60-2	3/4	.468	1/2	.234	1.985	.094	.700	17000	1.99
80-2	1	.625	5/8	.312	2.536	.125	.934	29000	3.40
100-2	1-1/4	.750	3/4	.375	3.107	.156	1.166	48000	5.10
120-2	1-1/2	.875	1	.437	3.921	.187	1.400	68000	7.65
140-2	1-3/4	1.000	1	.500	4.207	.219	1.634	92000	9.80
160-2	2	1.125	1-1/4	.562	5.039	.250	1.866	115000	13.10
A2040	1	.312	5/16	.156	.630	.060	.466	3700	.30
A2050	1-1/4	.400	3/8	.200	.790	.080	.584	6100	.50
A2060	1-1/2	.468	1/2	.234	.990	.094	.700	8500	.70
100C	1-1/4	.750	3/4	.375	1.701	.156	1.166	24000	2.58
120C	1-1/2	.875	1	.437	2.130	.187	1.400	34000	3.87
140C	1-3/4	1.000	1	.500	2.274	.219	1.634	46000	4.95
160C	2	1.125	1-1/4	.562	2.712	.250	1.866	58000	6.61
200C	2-1/2	1.562	1-1/2	.781	3.337	.312	2.250	95000	10.96
100C-2	1-1/4	.750	3/4	.375	3.107	.156	1.166	48000	5.10
120C-2	1-1/2	.875	1	.437	3.921	.187	1.400	68000	7.65
140C-2	1-3/4	1.000	1	.500	4.207	.219	1.634	92000	9.80
160C-2	2	1.125	1-1/4	.562	5.039	.250	1.866	115000	13.10



G&G Manufacturing Company roller chain is not rated for use on motorcycles or similar applications.

* #35 roller chain has a roller less bushing.

Stock in 10' sections and various length reels.
Cut to length pieces available by quotation.

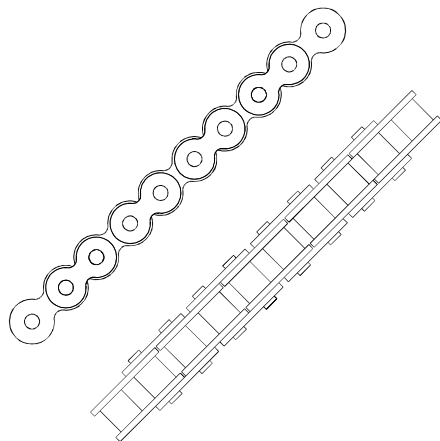


OMAHA, NEBRASKA
 (402) 453-9595
 1-800-442-6009
 FAX (402) 453-1740

ROLLER CHAIN

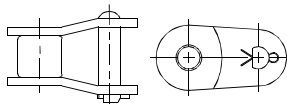
10' Boxes

Stock No.	Description	Wt. Lbs.
170-0035	#35 CHAIN 10'	2.10
170-0040	#40 CHAIN 10'	4.20
170-0041	#41 CHAIN 10'	2.50
170-0050	#50 CHAIN 10'	6.90
170-0060	#60 CHAIN 10'	10.00
170-0080	#80 CHAIN 10'	17.10
170-0100	#100 CHAIN 10'	25.80
170-0120	#120 CHAIN 10'	38.70
170-0140	#140 CHAIN 10'	49.50
170-0160	#160 CHAIN 10'	66.10
170-0200	#200 CHAIN 10'	109.60
170-050H	#50 HEAVY 10'	8.00
170-060H	#60 HEAVY 10'	12.20
170-080H	#80 HEAVY 10'	20.30
170-2-35	#35 DOUBLE 10'	4.00
170-2-40	#40 DOUBLE 10'	8.20
170-2-50	#50 DOUBLE 10'	13.60
170-2-60	#60 DOUBLE 10'	19.90
170-2-80	#80 DOUBLE 10'	34.00
170-2100	#100 DOUBLE 10'	51.00
170-2120	#120 DOUBLE 10'	76.50
170-2140	#140 DOUBLE 10'	98.00
170-2160	#160 DOUBLE 10'	131.00
170A2040	#A2040 CHAIN 10'	3.00
170A2050	#A2050 CHAIN 10'	5.00
170A2060	#A2060 CHAIN 10'	7.00
170C0100	#100C CHAIN 10'	25.80
170C0120	#120C CHAIN 10'	38.70
170C0140	#140C CHAIN 10'	49.50
170C0160	#160C CHAIN 10'	66.10
170C0200	#200C CHAIN 10'	109.60
170C1002	#100C DOUBLE 10'	51.00
170C1202	#120C DOUBLE 10'	76.50
170C1402	#140C DOUBLE 10'	98.00
170C1602	#160C DOUBLE 10'	131.00



Reels

Stock No.	Description Feet per Reel	Wt. Lbs.
169-0035	#35 250'/REEL	52.50
169-0040	#40 100'/REEL	42.00
169-0041	#41 250'/REEL	62.50
169-0050	#50 100'/REEL	69.00
169-0060	#60 100'/REEL	100.00
169-0080	#80 50'/REEL	85.50
169-0100	#100 50'/REEL	129.00
169-060H	#60 HEAVY 50'/REEL	61.00
169A2040	#A2040 100'/REEL	30.00
169A2050	#A2050 100'/REEL	50.00
169A2060	#A2060 100'/REEL	70.00



Offset Links

Stock No.	Size	Wt. Lbs.
172-0035	#35	.01
172-0040	#40	.02
172-0041	#41	.02
172-0050	#50	.04
172-0060	#60	.06
172-0080	#80	.14
172-0100	#100	.27
172-0120	#120	.48
172-0140	#140	.71
172-0160	#160	1.10
172-0200	#200	2.31
172-050H	#50HEAVY	.06
172-060H	#60 HEAVY	.09
172-080H	#80 HEAVY	.21
172-2-35	#35 DOUBLE	.02
172-2-40	#40 DOUBLE	.04
172-2-50	#50 DOUBLE	.08
172-2-60	#60 DOUBLE	.12
172-2-80	#80 DOUBLE	.14
172-2100	#100 DOUBLE	.54
172-2120	#120 DOUBLE	.96
172-2140	#140 DOUBLE	1.40
172-2160	#160 DOUBLE	2.20
172A2040	#A2040	.03
172A2050	#A2050	.05
172A2060	#A2060	.09

Connector Links

Stock No.	Size	Wt. Lbs.
171-0035	#35	.01
171-0040	#40	.02
171-0041	#41	.02
171-0050	#50	.04
171-0060	#60	.06
171-0080	#80	.14
171-0100	#100*	.27
171-0120	#120*	.48
171-0140	#140*	.71
171-0160	#160*	1.10
171-0200	#200*	2.31
171-050H	#50HEAVY	.06
171-060H	#60 HEAVY	.09
171-080H	#80 HEAVY	.21
171-2-35	#35 DOUBLE	.02
171-2-40	#40 DOUBLE	.04
171-2-50	#50 DOUBLE	.08
171-2-60	#60 DOUBLE	.12
171-2-80	#80 DOUBLE	.14
171-2100	#100 DOUBLE*	.54
171-2120	#120 DOUBLE*	.96
171-2140	#140 DOUBLE*	1.40
171-2160	#160 DOUBLE*	2.20
171A2040	#A2040	.03
171A2050	#A2050	.05
171A2060	#A2060	.09

